

Sílvio Salgado:
Intermission: without Sibelius

12 January - 13 February 2005

Sibelius Museum

Piispankatu 17, Turku, Finland

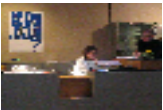
The Sibelius Museum opens its exhibitions season in 2005 with a solo art exhibition of Portuguese artist and independent curator Sílvio Salgado, who currently lives and works in Turku, Finland.

The artwork is developed specifically for the Sibelius Museum, as the artist's response to its physical, institutional and symbolic setting. The work consists of three distinct pieces that together constitute a large mixed media installation. The artist aims to challenge different cultural truths rooted in our understanding of Finnish culture, both in Finland and abroad.

Jean Sibelius vs. Finland? The name of the composer Jean Sibelius is as important for the identification of the Finnish culture as, say, forests, lakes, and Nokia. The name Sibelius directly refers to Finland and the concept 'Finnish music' often refers to one name, Sibelius. Could it have been otherwise?

Sílvio Salgado first called attention in Finland with his curatorial project Vienna International Apartment, a contemporary art showcase that moved from Vienna to Turku in 2003. As an artist, he has held several solo and group exhibitions in different European countries. His works are previously familiar to the Finnish public from the exhibitions 'IN&OUT' (Vienna International Apartment, Turku 2003), '2.44x1.9:treffit' (Halikko Cultural Centre Franssintalo, 2004) and the environmental art project 'Aurinkoinen tulevaisuus' (Kemiö, Perniö and Salo, 2004).

Works in the Sibelius Museum:



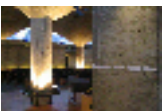
Do You Know Petri Huurinainen?

The question is put forward directly to the public, by means of poster advertisement. Who is Petri Huurinainen, how important is it to know him?



Pick your Favourite Composer!

The public is invited to participate in a raffle. Pick your favourite composer! Welcome to study the mechanisms of cultural production!



Intermission: Without Sibelius

A large text work that consists of over one hundred hand drawings of names of Finnish composers born between 1800 and 1979. Someone familiar?

For more information, please contact:

Sílvio Salgado, Tel. +358 (0)44 372 2241,
Silvio.Salgado@vienna-international-apartment.net
Sibelius Museum, www.sibeliusmuseum.abo.fi

Supported by:

Sibelius Museum Turku City Council
FuocoDesign Madrid Vienna International Apartment